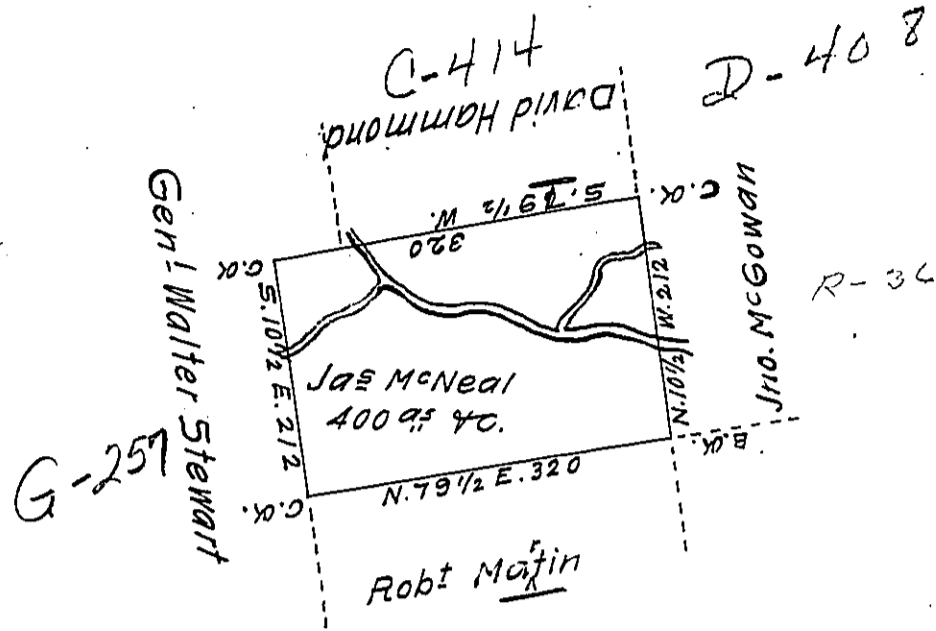


W



A draft of a tract of land called \_\_\_\_\_ situate on Black Creek  
 in the County of Northumd joining land survd for General Stewart  
 and near land survd for Tho<sup>s</sup> Rees containing four hundred acres  
 for James McNeal  
 & allowe, surveyed the 19<sup>th</sup> day of Feb<sup>y</sup> 1794, by virtue of a warrant dated  
 the 20<sup>th</sup> day of Jan<sup>y</sup> 1794 by

Wm Gray D.S.

To Daniel Brodhead Esq<sup>t</sup> }  
 Surv<sup>r</sup> Gen<sup>l</sup>

IN TESTIMONY that the above is a copy of the original remaining on file in  
 the Department of Internal Affairs of Pennsylvania, made  
 conformably to an Act of Assembly approved the 16th day of  
 February, 1833, I have hereunto set my Hand and caused  
 the Seal of said Department to be affixed at Harrisburg,  
 this twenty-seventh day of March 1912

*Henry Fowler*  
 Secretary of Internal Affairs.